

Where: Biddeford
Middle School
When: Mondays & Wednesdays
School Dismissal - 5:15 p.m.
Late Bus Available
Wednesdays only at 3:25pm

Parent Participation is
Welcome & Encouraged!

Have a talent, skill or interest you'd
like to share with the students?

Please contact us, we'd love to
have you join us at program any
day, assist with field trips, or
community service projects!

Applications available in the
Guidance Office

Questions?

Please Contact
Marissa Leighton, Program Coordinator at:
729-7399 ext. 328 OR
marissa@riverviewfoundation.org

Completed Applications can be returned to the
Guidance Office



After eleven years of successful programming, the state-recognized AIM program has been upgraded to the Excel program. Excel, based on a U.S. Department of Education national model, includes structured study time, and opportunities for parent engagement and community involvement.

"The program has strongly introduced self-regulation and calming techniques as well as a forum for exhibiting and exercising respect."

- Parent of 6th Grade Student



Funded in part by the Maine Department of Health & Human Services & Riverview Foundation in partnership with Biddeford School Department



Paul R. LePage, Governor

Department of Health
and Human Services

Maine People Living
Safe, Healthy and Productive Lives

Mary C. Mayhew, Commissioner



Riverview - Excel
Afterschool Program



EXCEL
STRIVING FOR EXCELLENCE
www.riverviewfoundation.org

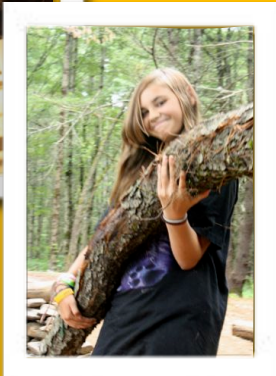


Session 1: Sept. 19th - Nov. 10th
 Session 2: Nov. 14th - Jan. 20th
 Session 3: Jan. 23rd - Mar. 30th
 Session 4: April 2nd - June 8th

Mon & Wed
 Program Days

Time
 With
 Friends!

Homework Club



P
R
O
B
L
E
M

S
O
L
V
-
I
N
G

Daily Schedule

- * Relax + Restart 2:15 - 2:35
- * Homework Club 2:35 - 3:40
- * Riverview Block 3:45 - 4:50
 EPIC + CAKE - Healthy Snack Included during This Block
- * ReGroup 4:50 - 5:00
- * Program End Time +
 Parent Pick-up 5:00 - 5:15

Group Reflection



Field Trips!



STEM CURRICULUM



New + Exciting Units on
 Science, Technology,
 Engineering and Math!

- Get involved in fun hands-on project activities linked to school-day learning!
- Investigate Native + Invasive Species with Gulf of Maine Research Institute (and have real life scientists validate your findings!)

